

Product Catalogue



'Together Clearly the Best!' is our company motto because we strongly believe that success can only be achieved by working together with all elements that form your business. Clients, collaborators, colleagues and, funnily enough, even competitors all help us, in their own way, to improve all the aspects of our organisation and motivate us to make things better. Ultimately, this synergy is translated into a process aimed at creating a product whose quality will satisfy the expectations of our clients and fulfil the needs of the end users. Since 1957, many years before we even thought of our company motto, high quality, innovation, customer-oriented service and cooperation have been the core values of Funke Digital TV, and today we proudly give you a taste of these core values transformed into products. Let us present our accomplishments and show you what you – as an important part, even an element, of our business – have helped us create. Enjoy the journey into our, and now your, little big Funke world!

*Stan Baaijens*  
CEO of Funke Digital TV

4G LTE Proof Products	4
Portable Solutions	10
Indoor Antennas	14
Combo (Indoor & Outdoor) Antennas	18
Outdoor Antennas	22
Long Distance Antennas	28
Automotive Antennas	30
Accessories	34
Specifications	38



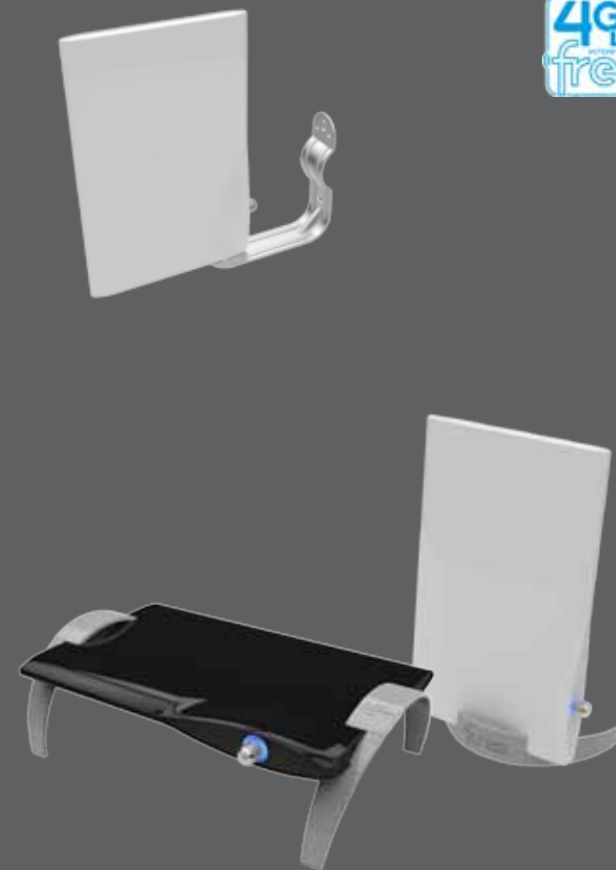
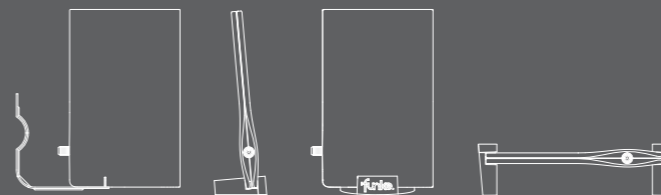
## 4G LTE Proof Products

4G LTE



### DSC550 4G LTE

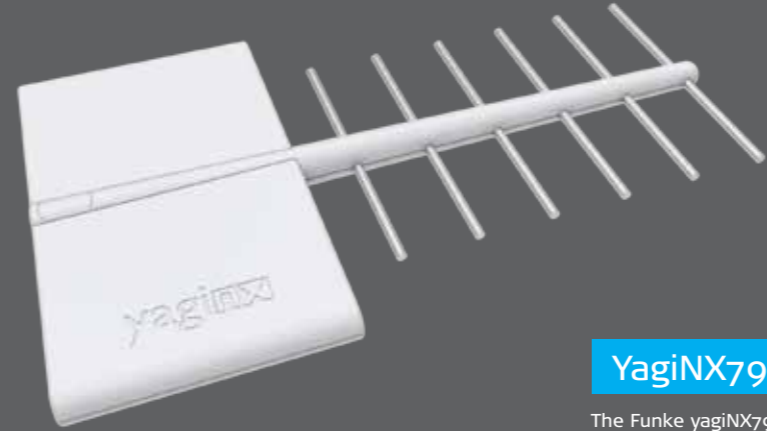
The Funke DSC550 4G LTE Combo offers the possibility to use this antenna both indoor and outdoor depending on your own personal needs (for in the city, for in rural areas, either far away from or nearby a transmitter, etc.). It provides a unique technical solution that guarantees a 4G LTE free TV signal reception that is proven to be the best one in the market. Its popular and thinnest design makes the DSC550 4G LTE blend perfectly into any interior and has also been designed for easy outdoor assembly.



European Quality

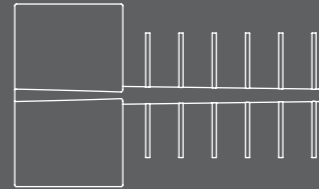


4G LTE



## YagiNX790

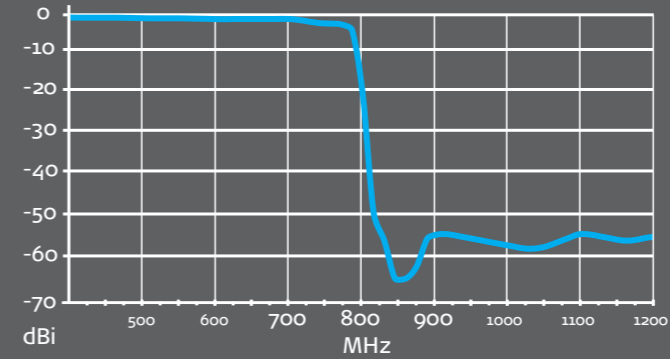
The Funke yagiNX790 brings the trusted and proven concept of the yagi antenna to the 21st century. Not only does this antenna put the performance of larger antennas in a small package, it also protects you from the upcoming interference caused by the 4G network. Because of its compact size and modern technology, installation is as easy as changing a lightbulb.



European Quality

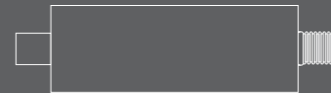


4G LTE



## NLTE790

The Funke NLTE790 is a smart solution for watching digital TV without signal reception being interrupted by 4G/LTE signal emission. With its compact size, state-of-the-art technology and sustainable performance, it has proven to be the best choice in 4G/LTE interference avoidant in-line filters. For the best result the Funke NLTE790 in-line filter is preferably mounted as close as possible to the receiver/STB.



European Quality



# Portable Solutions

Portable

## TV4ME

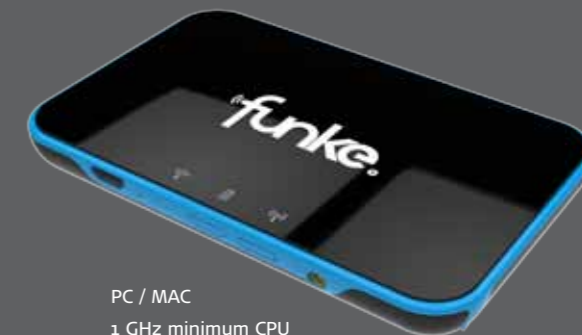
Without any wiring or subscription,TV4ME creates a second TV anywhere,so you can watch TV everywhere at home or on the go! TV4ME offers 4 hours of entertainment on a single charge, is easy to install, has an intuitive interface and supplies you with up to 7 days EPG. Whenever needed,TV4ME can also charge your phone's battery.

You are no longer restricted by TV programming because in a few clicks on the EPG you can schedule TV4ME to record your favourite program so you can watch it back whenever you want. Many hours of video can be recorded on Micro SD card and played later on any of your smart devices.



Apple  
iPhone 4S or newer  
Any iPad  
iOS4.3 or later

Android  
1 GHz minimum CPU  
Android 2.3 or newer



PC / MAC  
1 GHz minimum CPU  
Windows XP or newer  
OSX 10.7 or newer  
Supports SD & HD!

European Quality



Portable

## StiQ 1.0

The Funke StiQ is a fun device which allows you to watch digital TV on your laptop within an urban setting. The StiQ gives you the freedom to watch & record TV whenever you want! The StiQ's take-me-everywhere design can be taken along on any trip.

Features: PVR, EPG, Timeshift, etc.



Windows  
Windows® XP (32 Bit) or later  
Intel® Pentium® 4 2,0 GHz, Pentium® M  
1,3 GHz or equivalent AMD® Athlon™ XP  
Sound/graphics controllers with support  
for DirectX® 9 or higher

Mac OS  
Macintosh® computer with a PowerPC®  
G4, G5 or Intel Core® processor



European Quality

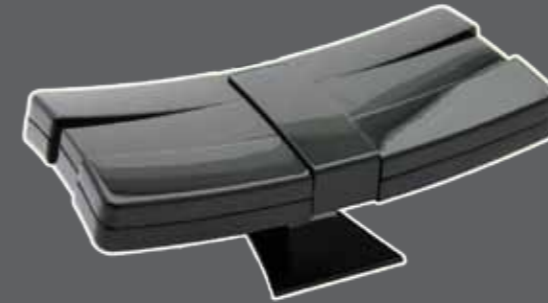
# Indoor Antennas

## DSC250

(4G LTE)

The Funke DSC250 is a perfect combination of stylish design and state of the art technology. This digital indoor antenna offers you the best indoor reception of DTT signals. It is an easy plug & play solution to watch digital TV at home. With its compact size and sustainable performance, it has proven to be the best choice in indoor digital TV antennas.

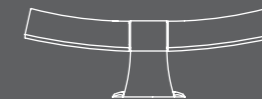
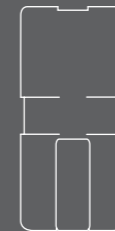




## Home 2.0

(4G LTE)

The Home 2.0, small-sized and trendy, has proven to be among one of the best performing digital indoor antennas on the market. With a design that matches all type of interiors, it provides hours of fun watching digital television. Thanks to its innovative technology TV signal reception is consistent and continuous. This antenna might be used within a reception range up to 25 km from the TV signal transmission tower.





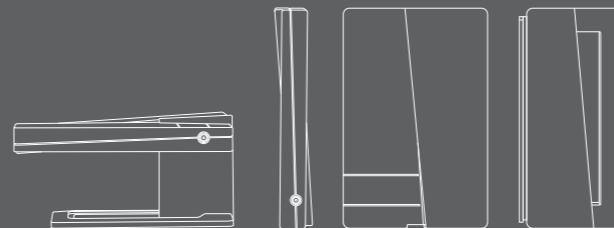
## Combo Antennas

Combo in- & outdoor

DSC500E

(4G LTE)

The Funke DSC500E indoor and outdoor digital antenna is a pioneering signal reception solution provided with the latest state-of-the-art technology. When performing best outdoor, the easy installation system of this antenna allows its user to have it installed outside but without having to go onto the rooftop. Its revolutionary technique guarantees the best possible reception of DTT signal. The Funke DSC500E is extendable for better and continuous reception, regardless of its environment.

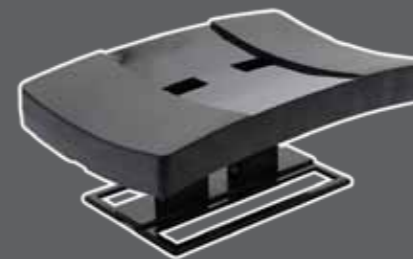
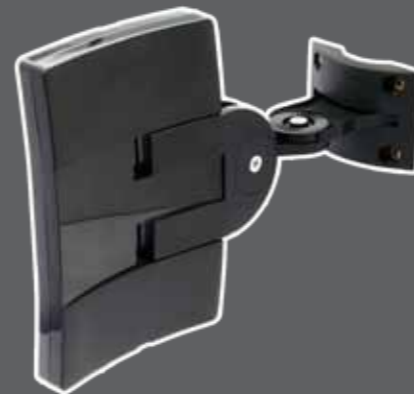
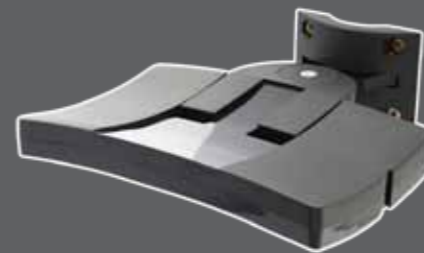


European Quality



## Combo 5.1 (4G LTE)

The Combo 5.1 indoor and outdoor digital antenna offers you the best of both worlds. This highly performing TV antenna enables you to experience watching TV whenever you want. This combo antenna solution comes with a distinctive range of handy accessories, which can also be used indoors. This antenna might be used within a reception range up to 40 km from the TV signal transmission tower.





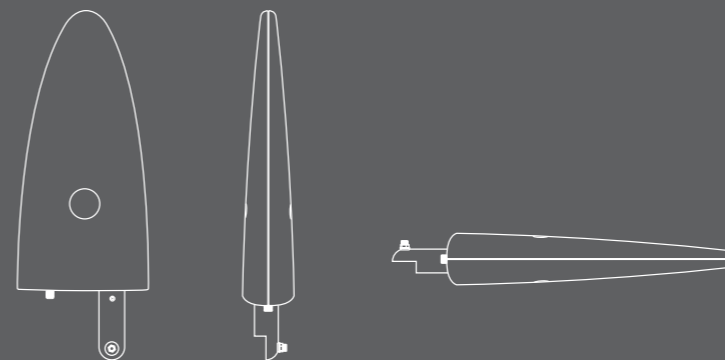
## Outdoor Antennas

Outdoor

DSC310

(4G LTE)

The Funke DSC310 is a very compact digital outdoor TV antenna. With its small size and stylish look it is appropriate for every location. This complete easy to install solution is a trendy substitute for traditional rooftop antennas; it guarantees perfect performance. The innovative and high quality technology with which this antenna is equipped offers a continuous and sustainable digital TV reception.

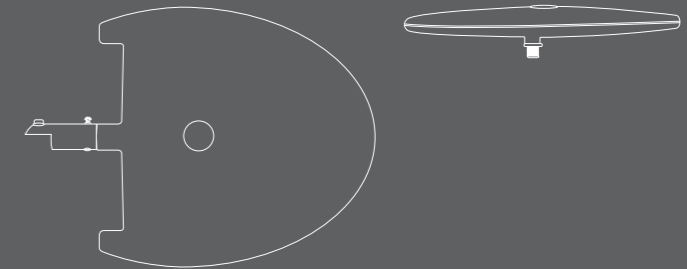


European Quality



ODSC100 (4G LTE)

The Funke ODSC100 is specially developed for the best outdoor reception of DTT signals. This digital outdoor antenna guarantees the best performance regardless of geographical features, like mountains, or buildings. It is a compact and easy to install antenna. Whether it is used to watch digital television at home, while camping or while spending some leisure time on the water.



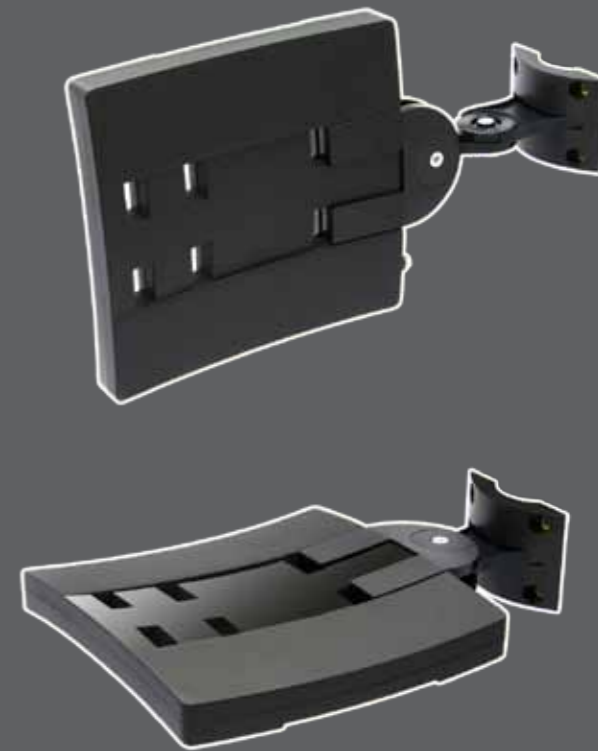
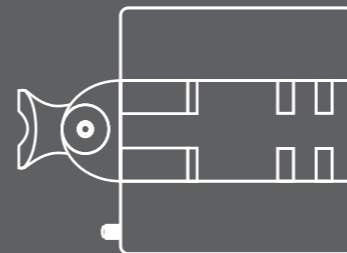


Outdoor

## City 5.5

(4G LTE)

The City 5.5 is an outdoor digital antenna of modern and trendy design but still tough and robust. This antenna solution performs flawlessly under all type of weather conditions. Easy to install at any outdoor location, its innovative technology allows the viewer to enjoy the latest technologies in digital television. This antenna might be used within a reception range up to 50 km from the TV signal transmission tower.

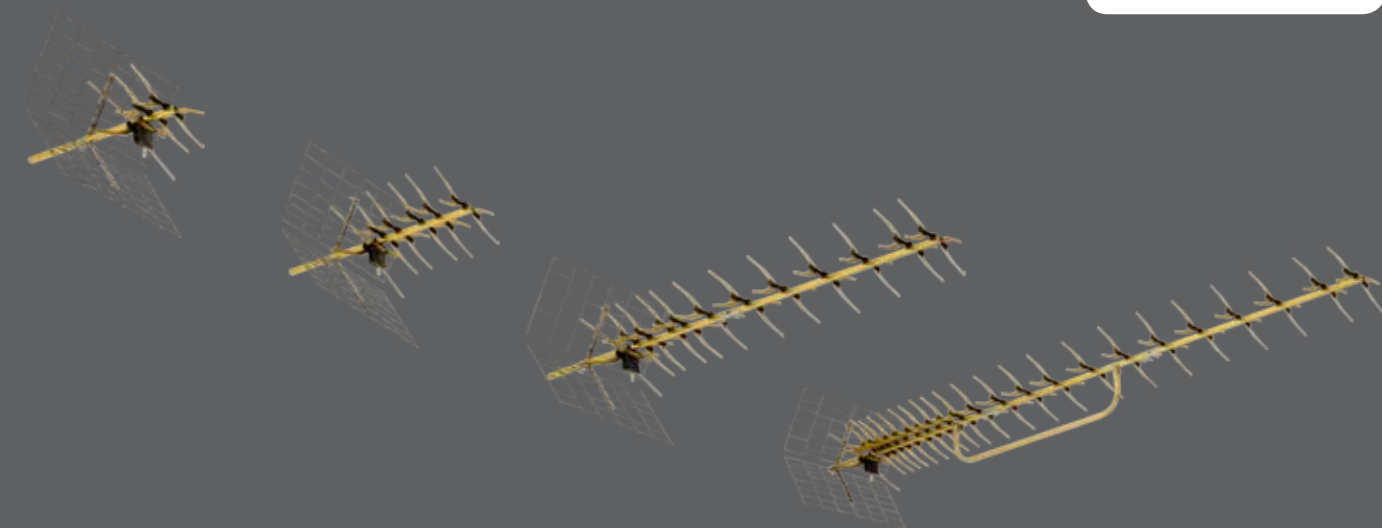


European Quality



# Long Distance Antennas

Long Distance



(A)BM-Series	(4G LTE)
--------------	----------

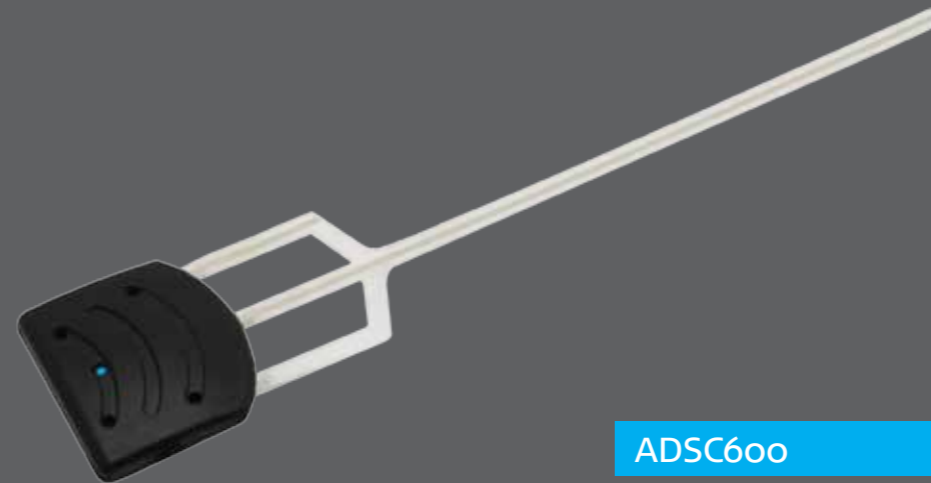
The Funke long-distance active ABM and passive BM antenna series have been specially developed for the outdoor reception of DTT signals. The selected range of long-distance outdoor antennas guarantees the best performance, regardless of geographical features like mountains or buildings. This antenna is suitable for any location and in all weather conditions.





# Automotive Antennas

Automotive



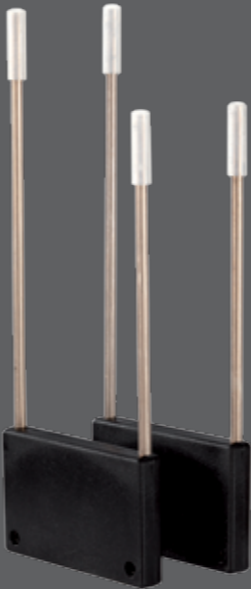
## ADSC600

The Funke ADSC600 Car Antenna for DAB and DAB+ is one of the best performing products available on the market and ensures crystal clear reception! With this antenna you can receive all available channels on air. Its transparent design is easy to install. Let's get digital: more channels & better reception.

European Quality



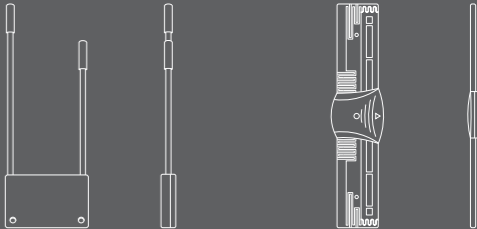
ADSC470



ADSC410

ADSC410 & ADSC470

The innovative technique of the Funke ADSC410 and ADSC470 automotive antennas makes it possible to watch digital TV while on the move. These digital antennas are specially developed for the automotive branch and offer a high quality TV digital signal reception for every occasion. The Funke ADSC410 is of compact size, solid design, high quality and is fully HDTV and 3DTV compatible.



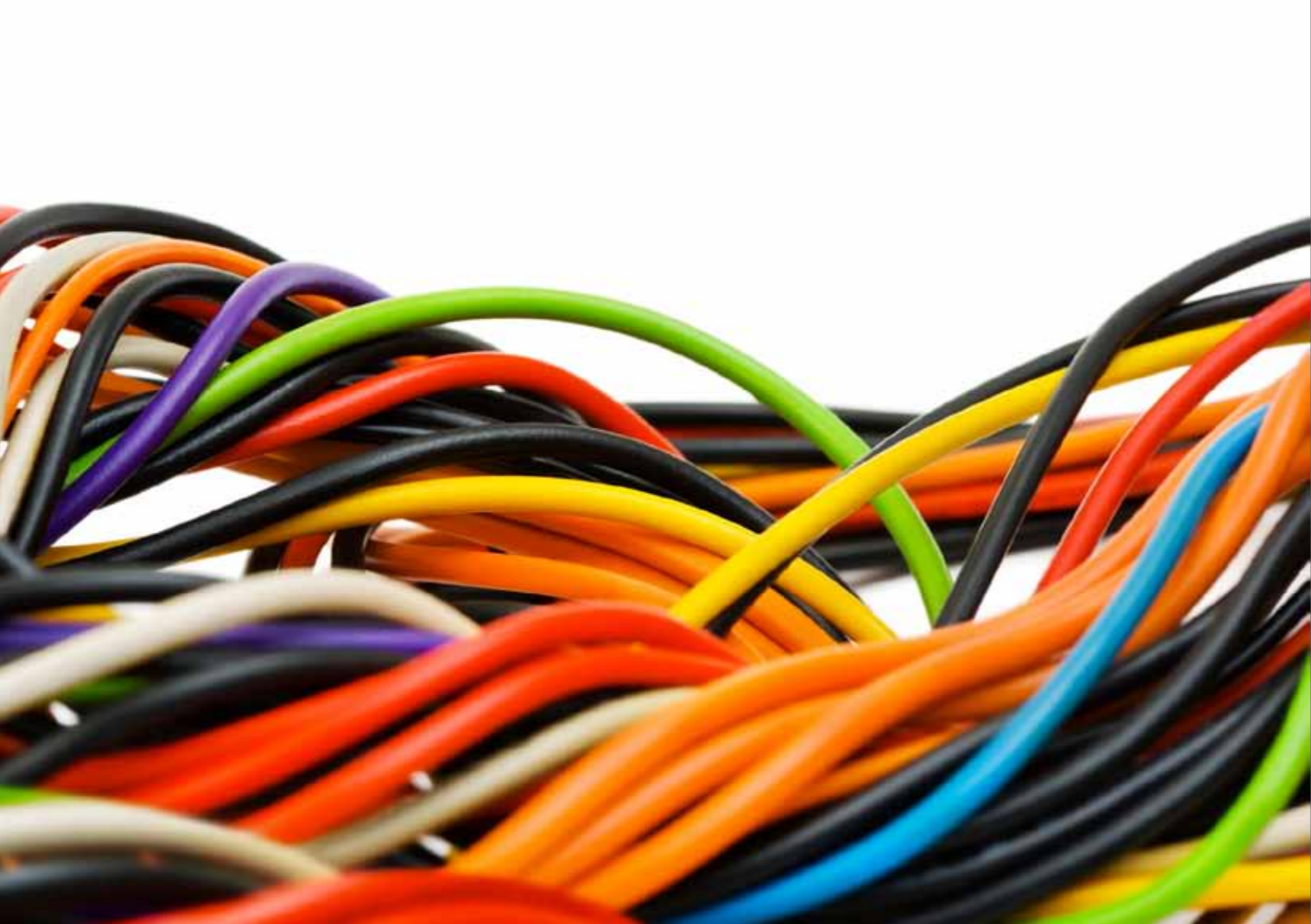


# Accessories

## PI150 + Universal PI

The Funke PI150 Power Inserter is specially developed to connect any active antenna directly to a TV (with integrated DTT tuner) or Set-Top-Box without antenna power outlet. It will enable the antenna to perform at its maximum capacity with minimal cabling and components.





### Coaxial Cables

When installing a high quality antenna, it is equally important to use a high quality coaxial cable to maintain the received signal and minimize the addition of noise. Funke offers a range of coaxial cables for indoor and for outdoor use in different lengths and with different connectors which all have premium shielding.





# Specifications

	DSC550 4G LTE	YagiNX790
Preferred applications	Indoor & Outdoor stationary reception	Outdoor stationary reception
Indicative reception distance	45 km	60 km
Channels VHF	5 - 12 (174 - 230 MHz)	-
Channels UHF	21 - 60 (470 - 790 MHz)	21 - 60 (470 - 790 MHz)
Total Gain VHF	15 dBi	-
Total Gain UHF	23 dBi	25 dBi
Input voltage	5 ± 0,5 VDC	5 ± 0,5 VDC
Input current	75 mA typ.	40 mA typ.
Amplifier principle	Ultra low noise amplifier	Ultra low noise amplifier
Connection	F-female	F-female
Cable	-	-
Warranty	7 years	7 years
Colour	Black / White	Off-white
Dimensions (h x w x d)	192 x 125 x 18 mm	380 x 225 x 40 mm
Weight	144 gr	400 gr

	NLTE790
Preferred applications	Indoor active and passive terrestrial antennas
Pass band	5 - 790 MHz
Insertion loss	1 dB typ.
Return loss	≥ 10 dB
Stop band	820 - 1000 MHz
Rejection	50 dB typ.
Connection	Female and male F-connector
Warranty	18 months
Dimensions (h x w x d)	80 x 20 x 20 mm



	DSC250	Home 2.0	DSC500E	Combo 5.1
Preferred applications	Indoor stationary reception	Indoor stationary reception	Indoor & Outdoor stationary reception	Indoor & outdoor stationary reception
Indicative reception distance	30 km	25 km	50 km	40 km
Channels VHF	5 - 12 (174 - 230 MHz)	5 - 12 (174 - 230 MHz)	5 - 12 (174 - 230 MHz)	5 - 12 (174 - 230 MHz)
Channels UHF	21 - 69 (470 - 862 MHz)	21 - 69 (470 - 862 MHz)	21 - 69 (470 - 862 MHz)	21 - 69 (470 - 862 MHz)
Total Gain VHF	8 dBi	7 dBi	18 dBi	8 - 9 dBi
Total Gain UHF	18 dBi	14 - 20 dBi	25 dBi	20 - 26 dBi
Input voltage	5 ± 0,5 VDC	5 ± 0,5 VDC	5 ± 0,5 VDC	5 ± 0,5 VDC
Input current	30 mA typ.	25 mA typ.	60 mA typ.	60 mA typ.
Amplifier principle	Low noise amplifier	Low noise amplifier	Ultra low noise amplifier	Low noise amplifier
Connection	IEC-male	IEC-male	F-female	F-female
Cable	3,5 m flexible coaxial cable	3,5 m flexible coaxial cable	-	-
Warranty	7 years	4 years	7 years	4 years
Colour	Black	Black	Black	Black
Dimensions (h x w x d)	158 x 72 x 17 mm	155 x 75 x 26 mm	192 x 125 x 27 mm	192 x 122 x 37 mm
Weight	140 gr	135 gr	250 gr	137 gr



	DSC310	ODSC100	City 5.5
Preferred applications	Outdoor stationary reception	Outdoor stationary reception	Outdoor stationary reception
Indicative reception distance	35 km	40 km	50 km
Channels VHF	5 - 12 (174 - 230 MHz)	5 - 12 (174 - 230 MHz)	5 - 12 (174 - 230 MHz)
Channels UHF	21 - 69 (470 - 862 MHz)	21 - 69 (470 - 862 MHz)	21 - 69 (470 - 862 MHz)
Total Gain VHF	6 dBi	4 dBi	8 - 9 dBi
Total Gain UHF	18 dBi	20 dBi	20 - 28 dBi
Input voltage	5 ± 0,5 VDC	5 ± 0,5 VDC	5 ± 0,5 VDC
Input current	40 mA typ.	30 mA typ.	25 mA typ.
Amplifier principle	Low noise amplifier	Low noise amplifier	Low noise amplifier
Connection	F-female	F-female	F-female
Cable	-	-	-
Warranty	7 years	7 years	4 years
Colour	Grey	White	Black
Dimensions (h x w x d)	240 x 110 x 42 mm	237 x 223 x 22 mm	192 x 182 x 36 mm
Weight	190 gr	290 gr	280 gr



	ABM3517	ABM3529	ABM3553	ABM3597
Preferred applications	Outdoor stationary reception	Outdoor stationary reception	Outdoor stationary reception	Outdoor stationary reception
Elements	17	29	53	97
Indicative reception distance	45 km	55 km	65 km	75 km
Windload (@ 120 km/h)	47 N	77 N	115 N	181 N
Working temperature	-40°C / +50°C	-40°C / +50°C	-40°C / +50°C	-40°C / +50°C
Channels VHF	5 - 12 (174 - 230 MHz)	5 - 12 (174 - 230 MHz)	5 - 12 (174 - 230 MHz)	5 - 12 (174 - 230 MHz)
Channels UHF	21 - 69 (470 - 862 MHz)	21 - 69 (470 - 862 MHz)	21 - 69 (470 - 862 MHz)	21 - 69 (470 - 862 MHz)
Antenna gain VHF	3 - 5 dBi	3 - 5 dBi	3 - 5 dBi	3 - 5 dBi
Antenna gain UHF	8 dBi	10 dBi	13 dBi	15 dBi
Amplifier gain VHF & UHF	16 dBi	16 dBi	16 dBi	16 dBi
Total gain VHF	19 - 21 dBi	19 - 21 dBi	19 - 21 dBi	19 - 21 dBi
Total gain UHF	24 dBi	26 dBi	29 dBi	31 dBi
Horizontal beamwidth	49 - 36°	48 - 30°	42 - 24°	34 - 20°
Vertical beamwidth	60 - 43°	58 - 40°	48 - 28°	34 - 22°
Directivity (front/back)	25 dB	25 dB	26 dB	28 dB
Input voltage	5 ± 0,5 VDC	5 ± 0,5 VDC	5 ± 0,5 VDC	5 ± 0,5 VDC
Input current	30 mA typ.	30 mA typ.	30 mA typ.	30 mA typ.
Output impedance	75 Ω	75 Ω	75 Ω	75 Ω
Amplifier principle	Low noise amplifier	Low noise amplifier	Low noise amplifier	Low noise amplifier
Connection	F-female	F-female	F-female	F-female
Warranty	7 years	7 years	7 years	7 years
Material	Gold anodized aluminium	Gold anodized aluminium	Gold anodized aluminium	Gold anodized aluminium
Working temperature	-40°C / +50°C	-40°C / +50°C	-40°C / +50°C	-40°C / +50°C
Length	470 mm	680 mm	1380 mm	2280 mm
Weight	0,910 kg	0,985 kg	1,235 kg	1,775 kg



	ABM4515	ABM4527	ABM4551	ABM4595
Preferred applications	Outdoor stationary reception	Outdoor stationary reception	Outdoor stationary reception	Outdoor stationary reception
Elements	15	27	51	95
Indicative reception distance	45 km	55 km	65 km	75 km
Windload (@ 120 km/h)	30 N	60 N	98 N	164 N
Working temperature	-40°C / +50°C	-40°C / +50°C	-40°C / +50°C	-40°C / +50°C
Channels VHF	-	-	-	-
Channels UHF	21 - 69 (470 - 862 MHz)	21 - 69 (470 - 862 MHz)	21 - 69 (470 - 862 MHz)	21 - 69 (470 - 862 MHz)
Antenna gain VHF	-	-	-	-
Antenna gain UHF	13 dBi	12 - 14 dBi	14 - 16 dBi	16 - 18 dBi
Amplifier gain VHF & UHF	16 dBi	16 dBi	16 dBi	16 dBi
Total gain VHF	-	-	-	-
Total gain UHF	29 dBi	28 - 30 dBi	30 - 32 dBi	32 - 34 dBi
Horizontal beamwidth	49 - 36°	48 - 30°	42 - 24°	34 - 20°
Vertical beamwidth	60 - 43°	58 - 40°	48 - 28°	34 - 22°
Directivity (front/back)	25 dB	25 dB	26 dB	28 dB
Input voltage	5 ± 0,5 VDC	5 ± 0,5 VDC	5 ± 0,5 VDC	5 ± 0,5 VDC
Input current	30 mA typ.	30 mA typ.	30 mA typ.	30 mA typ.
Output impedance	75 Ω	75 Ω	75 Ω	75 Ω
Amplifier principle	Low noise amplifier	Low noise amplifier	Low noise amplifier	Low noise amplifier
Connection	F-female	F-female	F-female	F-female
Warranty	7 years	7 years	7 years	7 years
Material	Gold anodized aluminium	Gold anodized aluminium	Gold anodized aluminium	Gold anodized aluminium
Working temperature	-40°C / +50°C	-40°C / +50°C	-40°C / +50°C	-40°C / +50°C
Length	460 mm	685 mm	1350 mm	2230 mm
Weight	0,800 kg	1,000 kg	1,350 kg	2,250 kg



	BM3517	BM3529	BM3553	BM3597
Preferred applications	Outdoor stationary reception	Outdoor stationary reception	Outdoor stationary reception	Outdoor stationary reception
Elements	17	29	53	97
Indicative reception distance	25 km	35 km	45 km	55 km
Windload (@ 120 km/h)	47 N	77 N	115 N	181 N
Working temperature	-40°C / +50°C	-40°C / +50°C	-40°C / +50°C	-40°C / +50°C
Channels VHF	5 - 12 (174 - 230 MHz)	5 - 12 (174 - 230 MHz)	5 - 12 (174 - 230 MHz)	5 - 12 (174 - 230 MHz)
Channels UHF	21 - 69 (470 - 862 MHz)	21 - 69 (470 - 862 MHz)	21 - 69 (470 - 862 MHz)	21 - 69 (470 - 862 MHz)
Antenna gain VHF	3 - 5 dBi	3 - 5 dBi	3 - 5 dBi	3 - 5 dBi
Antenna gain UHF	8 dBi	10 dBi	13 dBi	15 dBi
Amplifier gain VHF & UHF	-	-	-	-
Total gain VHF	3 - 5 dBi	3 - 5 dBi	3 - 5 dBi	3 - 5 dBi
Total gain UHF	8 dBi	10 dBi	13 dBi	15 dBi
Horizontal beamwidth	49 - 36°	48 - 30°	42 - 24°	34 - 20°
Vertical beamwidth	60 - 43°	58 - 40°	48 - 28°	34 - 22°
Directivity (front/back)	25 dB	25 dB	26 dB	28 dB
Input voltage	-	-	-	-
Input current	-	-	-	-
Output impedance	75 Ω	75 Ω	75 Ω	75 Ω
Amplifier principle	-	-	-	-
Connection	F-female	F-female	F-female	F-female
Warranty	7 years	7 years	7 years	7 years
Material	Gold anodized aluminium	Gold anodized aluminium	Gold anodized aluminium	Gold anodized aluminium
Working temperature	-40°C / +50°C	-40°C / +50°C	-40°C / +50°C	-40°C / +50°C
Length	470 mm	680 mm	1380 mm	2280 mm
Weight	0,910 kg	0,985 kg	1,235 kg	1,775 kg



	BM4515	BM4527	BM4551	BM4595
Preferred applications	Outdoor stationary reception	Outdoor stationary reception	Outdoor stationary reception	Outdoor stationary reception
Elements	15	27	51	95
Indicative reception distance	25 km	35 km	45 km	55 km
Windload (@ 120 km/h)	30 N	60 N	98 N	164 N
Working temperature	-40°C / +50°C	-40°C / +50°C	-40°C / +50°C	-40°C / +50°C
Channels VHF	-	-	-	-
Channels UHF	21 - 69 (470 - 862 MHz)	21 - 69 (470 - 862 MHz)	21 - 69 (470 - 862 MHz)	21 - 69 (470 - 862 MHz)
Antenna gain VHF	-	-	-	-
Antenna gain UHF	13 dBi	12 - 14 dBi	14 - 16 dBi	16 - 18 dBi
Amplifier gain VHF & UHF	-	-	-	-
Total gain VHF	-	-	-	-
Total gain UHF	13 dBi	12 - 14 dBi	14 - 16 dBi	16 - 18 dBi
Horizontal beamwidth	49 - 36°	48 - 30°	42 - 24°	34 - 20°
Vertical beamwidth	60 - 43°	58 - 40°	48 - 28°	34 - 22°
Directivity (front/back)	25 dB	25 dB	26 dB	28 dB
Input voltage	-	-	-	-
Input current	-	-	-	-
Output impedance	75 Ω	75 Ω	75 Ω	75 Ω
Amplifier principle	-	-	-	-
Connection	F-female	F-female	F-female	F-female
Warranty	7 years	7 years	7 years	7 years-
Material	Gold anodized aluminium	Gold anodized aluminium	Gold anodized aluminium	Gold anodized aluminium
Working temperature	-40°C / +50°C	-40°C / +50°C	-40°C / +50°C	-40°C / +50°C
Length	460 mm	685 mm	1350 mm	2230 mm
Weight	0,800 kg	1,000 kg	1,350 kg	2,250 kg



	ADSC410	ADSC470	ADSC600
Preferred applications	Portable or mobile diversity receiver	Portable or mobile diversity receiver	Automotive DAB / DAB+ receiver
Indicative reception distance	20 km	20 km	20 km
Channels VHF	5 - 12 (174 - 230 MHz)	5 - 12 (174 - 230 MHz)	174 - 240 MHz
Channels UHF	21 - 69 (470 - 862 MHz)	21 - 69 (470 - 862 MHz)	L-band (1452 - 1492 MHz)
Total Gain VHF	4 - 6 dBi	4 - 6 dBi	11 - 18 dBi
Total Gain UHF	16 dBi	16 dBi	5 - 11 dBi
Input voltage	5 ± 0,5 VDC	5 ± 0,5 VDC	5 - 12 ± 0,5 VDC
Input current	30 mA typ.	30 mA typ.	38 mA typ.
Amplifier principle	Low noise amplifier	Low noise amplifier	Low noise amplifier
Connection	F-male	F-male	Female angled SMB
Cable	5 m flexible coaxial cable	5 m flexible coaxial cable	3 m flexible coaxial cable
Warranty	7 years	7 years	7 years
Colour	Black	Black	Black / Transparent
Dimensions (h x w x d)	178 x 65 x 9 mm	144 x 33 x 6,5 mm	250 x 50 x 10 mm
Weight	130 gr	75 gr	60 gr



	StiQ 1.0	TV4ME
Preferred applications	Portable reception in urban environment	Portable reception in urban and remote areas
Indicative reception distance	10 km	30 km
Available colours	Black & Green	Black & Blue
Dimensions	67 x 20 x 17 mm	98 x 62 x 12 mm
Weight	33 gram	50 gram
Connection	USB 2.0	WiFi / micro USB
Supported TV standard	DVB-T	DVB-T
Video format	MPEG-2, MPEG-4 H.264 / AVC	MPEG-2, MPEG-4 H.264 / AVC
Audio format	MPEG audio layer 1/2 stereo/dual	MPEG audio layer 1/2 stereo/dual
Features	PVR / EPG / Time shifting	PVR / Scheduled recording / EPG / Time shifting

Disclaimer  
No rights can be claimed from the information in this catalogue.  
Although all is done to make the information as complete and correct as possible, no rights can be derived from the information presented in this catalogue.



	Pl150
Preferred applications	Remote power to active antenna
Power connection	AC power plug with USB out
RF connections	PAL (IEC)
Input voltage	100 - 240 VAC - 50/60 Hz
Output voltage	5 VDC
Output current	170 mA
Loss	1 dB max.
Frequency range	5 - 862 MHz
Warranty	18 months

	Universal PI
Preferred applications	Remote power to active antenna
Power connection	AC power plug
RF connections	F + PAL (IEC) adapters
Input voltage	100 - 240 VAC - 50/60 Hz
Output voltage	5 VDC
Output current	170 mA
Loss	1 dB max.
Frequency range	5 - 862 MHz
Warranty	18 months

