



## AV BASICS

BY SALAMANDER DESIGNS

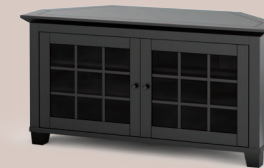
A sophisticated, premium audio/video furniture solution packed with practical features. Delivered fully assembled. It appeals to individuals looking for a stylish, versatile AV solution that complements their décor and meets the needs of today's electronic components.

**IR PASS-THRU**  
Remote-friendly doors allow pass-thru for remote control of electronics.

**WIRE MANAGEMENT**  
Removable rear panels and cable raceways makes managing and concealing cables easy.

**VENTILATION**  
Built-in ventilation louvers keep gear cool to ensure optimal performance.

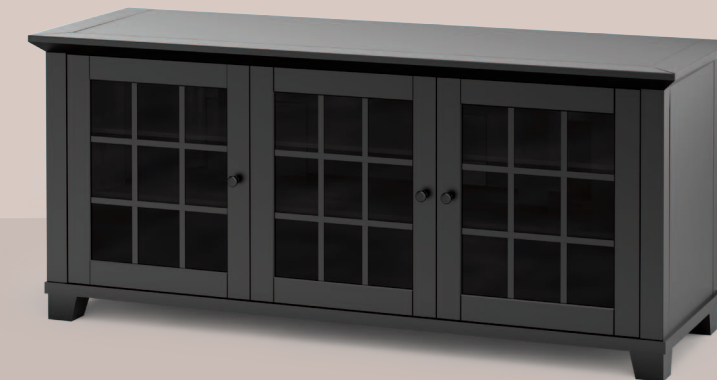
**QUALITY AND CONSTRUCTION**  
Solid, high-quality, fully assembled cabinet with premium hardware.



### SDAV1

**TRADITIONAL**  
Timeless, American Classic

A classic American style in Matte Black or Warm Cherry fits comfortably in almost any décor.



### SDAV2

**CONTEMPORARY**  
Sleek and Streamlined

This sleek, sophisticated design features recessed glass top and cabinet door fronts and is complemented by thick, wooden side panels in a Wenge Espresso finish.



### SDAV3

**CONTEMPORARY**  
Comfortable Modern Design

A modern combination of great lines and beautiful wood make this a show stopper. The cabinets are available in Natural Cherry or Espresso Oak and feature sliding doors, open center, and storage drawer.



# AV BASICS

BY SALAMANDER DESIGNS



SalamanderDesigns.com

## SDAV1 / 5026 CORNER CABINET



SDAV1/5026/C (Warm Cherry)



SDAV1/5026/B (Matte Black)

**Overall dimensions:** 50"W x 26"H x 20"D  
1270 x 660 x 508mm

**Interior:** includes two adjustable shelves  
Double bay: 44.5"H x 20.75"H x 16.6"D  
1131 x 527 x 421mm

**Capacities:** tv's up to 52" & 4 components  
Top: 100 lbs. (45kg)  
Each interior shelf: 20 lbs (9kg)

## SDAV1 / 5031



SDAV1/C (Warm Cherry)



SDAV1/B (Matte Black)

**Overall dimensions:** 50"W x 31"H x 22.5"D  
1270 x 787 x 571mm

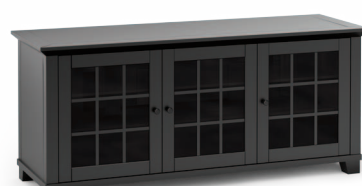
**Interior:** includes two adjustable shelves  
Upper opening: 43"W x 6.8"H x 19.3"D  
1094 x 174 x 492mm  
Door (each bay): 19.25"W x 16.6"H x 18"D  
489 x 421 x 457mm

**Capacities:** tv's up to 52" & 4 components  
Top: 100 lbs. (45kg)  
Upper opening: 75 lbs. (34kg)  
Each interior shelf: 50 lbs. (23kg)

## SDAV1 / 6626



SDAV1/6626/C (Warm Cherry)



SDAV1/6626/B (Matte Black)

**Overall dimensions:** 66"W x 26"H x 20"D  
1676 x 660 x 508mm

**Interior:** includes six adjustable shelves  
Outer doors (each bay): 19.3"W x 20.75"H x 16.5"D  
490 x 527 x 419mm  
Center door: 19"W x 20.75"H x 16.5"D  
482 x 527 x 419mm

**Capacities:** tv's up to 65" & 8 components  
Top: 200 lbs. (90kg)  
Each interior shelf: 50 lbs. (23kg)

## SDAV2 / 7224



SDAV2/7224/W (Wenge Espresso)

**Overall dimensions:** 72"W x 24"H x 20"D  
1829 x 610 x 508mm

**Interior:** includes two adjustable shelves  
Center opening: 28"W x 8"H x 18.8"D  
710 x 203 x 477mm  
Center flip-down door: 28"W x 9.75"H x 18.8"D  
710 x 247 x 477mm  
Outer door (each bay): 20"W x 19"H x 18"D  
508 x 482 x 457mm

**Capacities:** tv's up to 83" & 6 components  
Top: 200 lbs. (90kg)  
Upper opening: 50 lbs. (23kg)  
Each interior shelf: 50 lbs. (23kg)

## SDAV2 / 6228



SDAV2/6228/W (Wenge Espresso)

**Overall dimensions:** 62"W x 28"H x 20"D  
1574 x 711 x 508mm

**Interior:** includes six adjustable shelves  
Door (each bay): 19.4"W x 23"H x 18"D  
493 x 584 x 457mm

**Capacities:** tv's up to 65" & 9 components  
Top: 200 lbs. (90kg)  
Each interior shelf: 50 lbs. (23kg)

## SDAV3 / 7022



SDAV3/7022/C (Natural Cherry)



SDAV3/7022/E (Espresso Oak)

**Overall dimensions:** 70"W x 22"H x 21.875"D  
1778 x 559 x 556mm

**Interior:** includes two adjustable shelves  
Sliding door (each bay): 22.2"W x 17.4"H x 18.2"D  
564 x 442 x 462mm  
Drawer: 19.875"W x 7.625"H x 15.125"D  
505 x 194 x 384mm  
Center opening: 21.875"W x 8.375"H x 18.25"D  
556 x 213 x 464mm

**Capacities:** tv's up to 83" & 5 components  
Top: 250 lbs. (113kg)  
Center opening: 50 lbs. (23kg)  
Drawer holds: 62 dvd's or 159 cd's  
Each interior shelf: 50 lbs. (23kg)

# DEFINING ORIGINAL™

Salamander Designs, the leader in premium quality home entertainment furniture is well known for product lines that are highly flexible, very customizable and available in many, many styles, materials, finishes, and performance options.

For our AV Basics product line, we decided to take a somewhat different approach.

Based on our years of experience, we defined a line that combines popular styles with features we know will enhance the performance of most audio/video systems.

These are high quality pieces of furniture in enough styles that everyone will find something to fit their décor. The performance is built in, and best of all, they quick ship to you fully assembled.

**AV BASICS**...Before you know it, you'll be enjoying your new furniture.